

MOBILE HOUSES



www.myglamping.biz

info@myglamping.biz



TOKYO HOUSE– 36 m2

TOKYO HOUSE – 36 m²

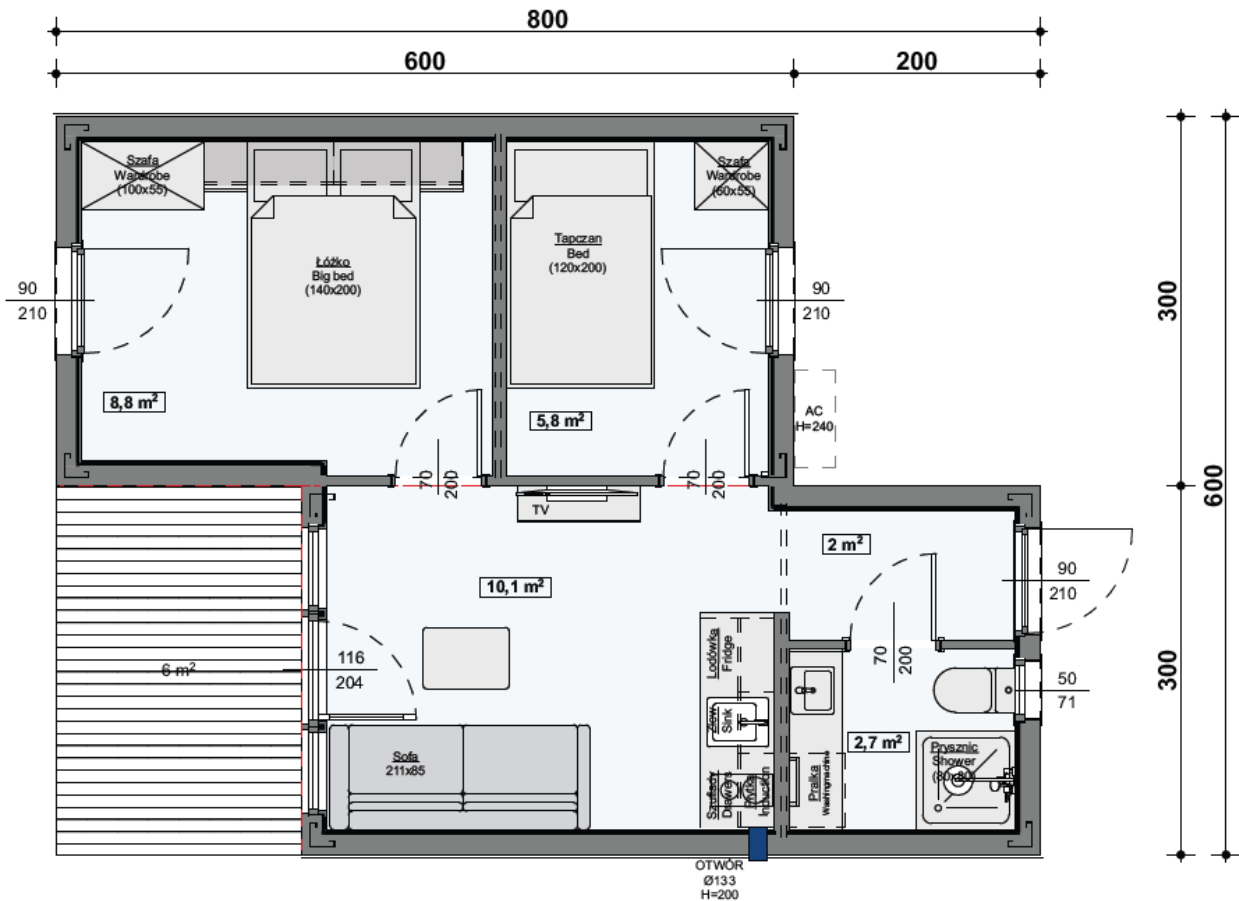
A two-module facility with a built-up area of 36 m²

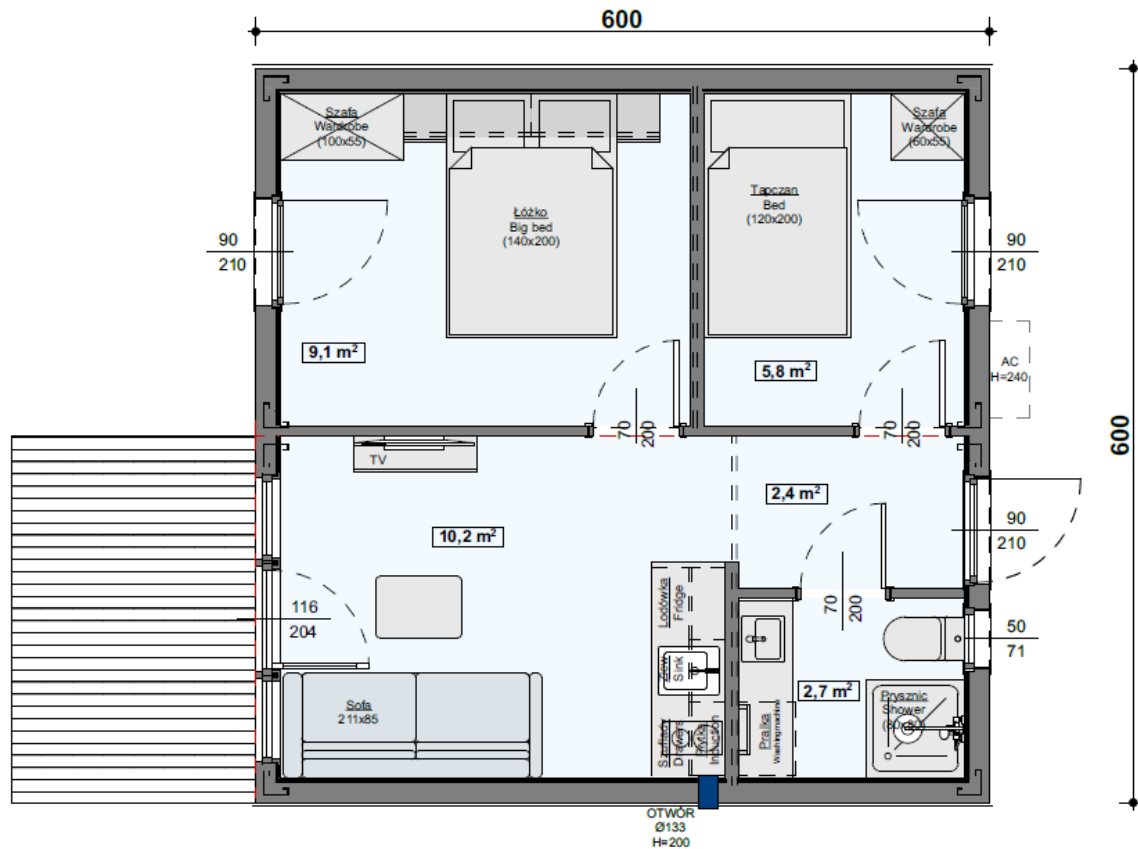
Main specification of the object:

The offer refers to a two-module building with a built-up area of approximately 36 m²

Floor plan:

- Hall/passage
- Living room with kitchenette
- Two bedrooms
- Toilet





SHELL AND CORE STANDARD:

Structure:

The structure of the building is a rigidly welded steel frame made of cold-bent container profiles and shapes. From the bottom it is protected with galvanized metal sheet. Each facility has a dedicated assembly system for transport and unloading/loading. As part of the shell and core standard, the Object is equipped with crane eye places located at the top of the structure.

Construction of walls, roof and floor:

External walls and roof are insulated with 10cm mineral wool, floor is insulated with 13,5 cm thickness closed-cell PUR foam. The partition walls are finished from the inside with MFP or OSB board.

Partition walls are built of wooden frame structure, soundproofed with mineral wool, finished with OSB or MFP board.

Facade and roof:

Facade finished with seam metal sheet and Siberian larch boards impregnated 2 times, ventilation space at the bottom of the building protected by perforated angle bars. The roof is finished outside with anthracite colored seam metal sheet.

Window and door joinery:

PVC 6-chamber double-glazed window joinery in white inside and anthracite outside, with air vents, tilt and turn balcony doors in the living room. Insulated entrance door, 90 cm wide. External sills and flashings around windows in anthracite steel colour.

Internal electrical installation:

Three-phase electrical installation, main switchboard, installation for lighting and sockets, one aerial point, 1 internet point, ventilator in bathroom; installation for radiators, installation for underfloor heating, installation for access control.

External electrical installation:

Electrical installation outside: 1 double electrical sockets on the façade; 3 lighting points, aerial outlet at the top of the house.

Sanitary and plumbing installation:

Installation in kitchen for sink, dishwasher, in bathroom for sink, shower, toilet and washing machine.

*External such as terraces, trellises and others are not included in the price.

Additional options: Model Tokyo 36m2
Insulation PUR foam
In the external walls and roof PUR foam insulation, instead of mineral wool insulation, the insulation was made of open-cell foam 10 cm thick and the floor, instead of open-cell foam, closed-cell foam is used.
Warm + version
Approx. 17cm thick open-cell PUR foam insulation instead of mineral foam insulation. In the roof level closed-cell PUR foam insulation instead of mineral wool with approx. 14cm thickness. In the floor , closed-cell PUR foam insulation, instead of open-cell.
Floor heating
Infrared electric floor heating in all rooms with WI-FI.
Bathroom with equipment
Walls insulated with a waterproofing, finished with moisture and impact resistant vinyl panels, increasing the acoustic insulation of the rooms, In four colours to choose from. The ceiling is finished with openwork boards

Painted black Shower with mixer tap and shower set with rain shower. Suspended WC with slowly falling board. Bath with mixer tap. Cabinet with pedestal sink and mixer tap. Instantaneous water heater and built-in washing machine. Round mirror in black frame. Ladder radiator in black.

Internal doors

Internal swing door made of MDF with ventilation cut-out and adjustable frame. Full veneered with glass panes veneered in white. Fittings in black.

Floor finishing

Luxor vinyl panels -abrasion class Group T. Waterproof and resistant to temperature differences. Available in three colours to choose from: MS003, MS004 and MS005

or

Pergo laminate panels with patented top protective layer TitanX™, class AC6 meeting the highest abrasion resistance criteria. They are in three colours to choose from: Bergen, Cologne Oak and Vitaleta Oak
White coated wooden skirting boards 7 cm high.

Wall finishing

Painted HDF wall panels, made from wood fibres. Their dry production method guarantees smooth surface. Available in three colours to choose from: white, light grey and beige Wall finishing with white MDF panel.

Wooden paneling on the ceiling.

Wooden paneling on the ceiling instead of HDF panels.

Upholstered panels

Made of Velvet upholstery fabric, easy to care for and resistant to abrasion. Soft and velvety material not only captivates with its appearance but is also pleasant to the touch. Available in four colours to choose from: black, light blue, bottle green and navy blue. Upholstered elements are used in bedrooms in the area close to the bed to form the headboard.

Pleats

Internal sun blinds in the form of pleats: grey and milky colour

Interior lighting and electrical fittings

Track lighting in the living room. In the bathroom above the mirror, wall lamps and surface-mounted LED round hermetic spots. In the hallway -round LED surface-mounted luminaires. In the bedrooms, 3-point ceiling lighting. Sockets and switches according to the design. They meet the highest technological standards, as well as they comprehensively and functionally complete the interior. Available in two colours to choose from: white series or black series

Upholstered furniture

In the living room a sofa bed 211x85cm in grey color.

In the large bedroom an upholstered continental bed 140x200cm and 120x200cm with a bedding container available in three colours to choose from: : light grey, grey, beige.

Equipped kitchen

Kitchen furniture manufactured in our carpentry workshop from laminated chipboard by Pfleiderer. Bodies and front available in four colours to choose from: light grey, white, black graphite, oak. Tops available in three colours to choose from: oak, marble, grey concrete.

We use furniture fittings of a renowned brand Blum. The kitchens are functional and the systems are faultless and have a long lifetime.

The wall between the countertop and upper cabinets is finished with laminated chipboard in the colour of the countertop, Under upper cabinets is placed LED tape

We equip kitchens with appliances from leading European manufacturers, that have an international service. This way we are sure that they meet the technical and sanitary requirements of the EU.

Black conglomerate sink with mixer tap, built-in fridge, 2-burner induction cooktop, under-cabinet cooker hood.

Furniture arrangements

Free-standing wardrobes in bedrooms, round tables by the beds, wardrobe furniture, hanging cabinets above the bed , RTV cabinet, coffee table. Laths above the RTV cabinet in the living room in oak color.

Air conditioning

We install air conditioning of the highest quality from the world's leading brands. Undoubtedly, air conditioning with heating function significantly increases the comfort on hot and cold days. Two units inside in the living room and bedroom and two external units on the gable wall of the house.

Window joinery with external anthracite veneer

External veneer in anthracite wood structure instead of white window joinery.

Window joinery with double-side anthracite veneer

Window joinery with double-side anthracite veneer in anthracite color in wooden structure instead of white window joinery.

Window joinery with a triple-glazed unit with a warm frame

Triple-glazed windows with a U = 0.9 coefficient and installation with a warm frame.

Mosquito nets

Mosquito nets are adapted to the window size, they have an anthracite-coloured frame. Provide protection against insects. Frame in anthracite colour

The facade made of PVC panels

Facade made of Kerrafront panels instead of wooden metal sheet. These are modern facade cladding that does not require any maintenance during the usage.

Outdoor lighting

The facade of the house is illuminated by LED sconces in anthracite color.

